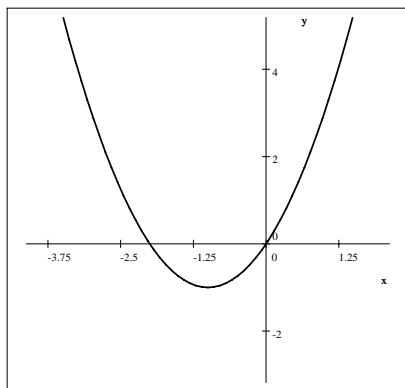


Practice Problems
for the Calculus I/Precalculus Placement Test - Fall, 2005

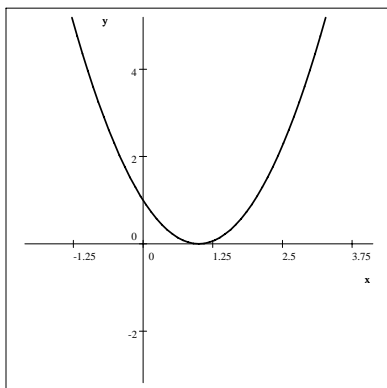
Part 6

1. Match each graph to one of the following functions without using a graphing utility.

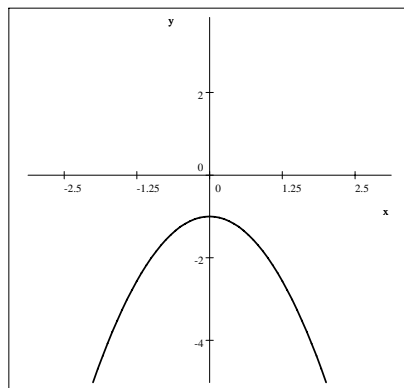
- a. $f(x) = x^2 - 1$
- b. $f(x) = -x^2 - 1$
- c. $f(x) = x^2 - 2x + 1$
- d. $f(x) = -x^2 + 2x + 1$
- e. $f(x) = x^2 - 2x + 2$
- f. $f(x) = x^2 + 2x$



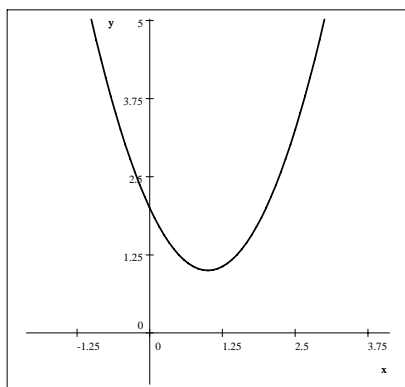
(i)



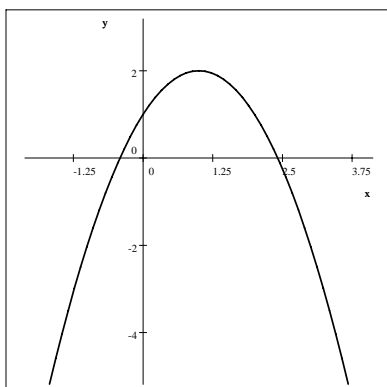
(ii)



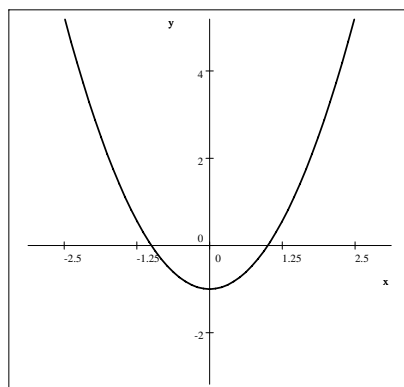
(iii)



(iv)



(v)



(vi)

2. Write each quadratic equation in the form of $f(x) = a(x - h)^2 + k$, find its x -intercept(s) if possible and then sketch the graph.

- a. $f(x) = x^2 + 2x - 8$
- b. $f(x) = -x^2 + 4x$
- c. $f(x) = 2x^2 - 8x + 1$
- d. $f(x) = -2x^2 + 2x + 3$